

# impressions > rembrandt

KRZESŁA / CHAIRS

impressions



I 040



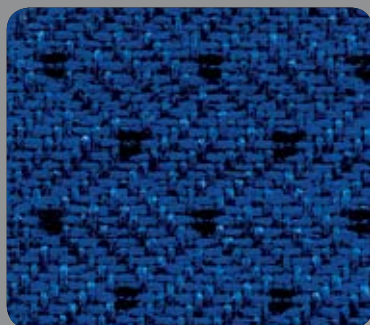
I 042



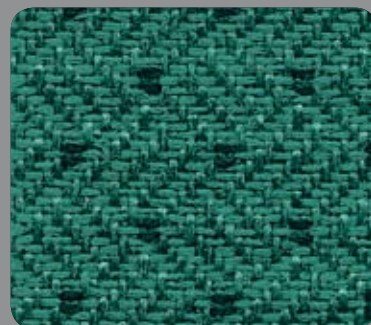
I 029



I 013



I 001



I 032



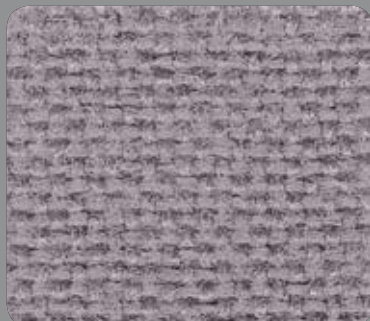
I 037

KRZESŁA / CHAIRS

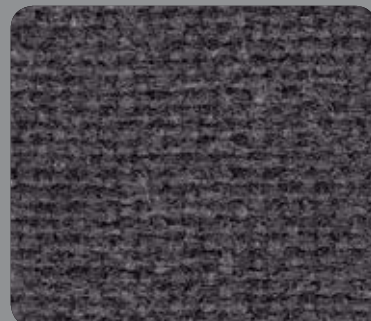
rembrandt



R30



R13



R31



R11



R09



R34



R07



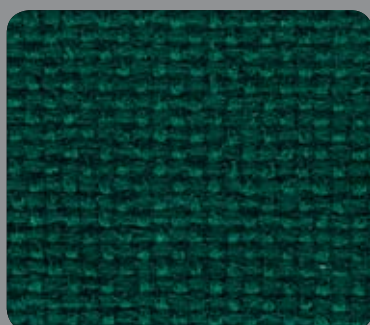
R61



R22



R66



R23



R36

	IMPRESSIONS	REMBRANDT
<b>Composition</b> <b>Skład</b>	100% Polyolefin 100% Polyolefin	100% Polyolefin 100% Polyolefin
<b>Width</b> <b>Szerokość</b>	170 cm	170 cm
<b>Weight</b> <b>Gramatura</b>	210 g/m <sup>2</sup>	230 g/m <sup>2</sup>
<b>Abrasion Resistance</b> <b>Odporność na ścieranie</b> EN ISO 12947-2	40 000 Martindale cycles 40 000 cykli Martindale	40 000 Martindale cycles 40 000 cykli Martindale
<b>Fastness to light</b> <b>Odporność na światło</b> EN ISO 105-B02	6	6
<b>Fastness to Rubbing</b> <b>Odporność na tarcie</b> EN ISO 105-X12	wet: 4, dry: 4 na mokro: 4, na sucho: 4	wet: 4, dry: 4 na mokro: 4, na sucho: 4
<b>Peeling Resistance</b> <b>Odporność na pilling</b> EN ISO 12947-2	4	4
<b>Flammability</b> <b>Trudnozapałność</b>	BS EN 1021-1 (cigarette) BS 476 Part 7 Class 1 BS EN 1021-1 (papieros) BS 476 część 7 Klasa 1	BS EN 1021-1 (cigarette) BS EN 1021-1 (papieros)



**NOWY STYL GROUP™**  
 BN Office Solution™  
 belongs to the Nowy Styl Group  
[www.nowystylgroup.com](http://www.nowystylgroup.com)

BN OFFICE SOLUTION SP. Z O.O.

**DZIAŁ HANDLOWY**

ul. Mięśowicza 6, 38-400 Krosno

TEL 0 13 437 62 50 › FAX 0 13 437 62 55

INFOLINIA 0 801 150 157

E-MAIL [info@bnos.pl](mailto:info@bnos.pl)

WWW.[bnos.pl](http://bnos.pl)

**EXPORT DEPARTMENT**

ul. Mięśowicza 6, 38-400 Krosno, Poland

TEL +48 13 436 36 05 › FAX +48 13 437 62 57

TEL +48 13 437 62 50

E-MAIL [info@bnos.eu](mailto:info@bnos.eu)

WWW.[bnos.eu](http://bnos.eu)

BSQU-WRZ10 – 01/2008