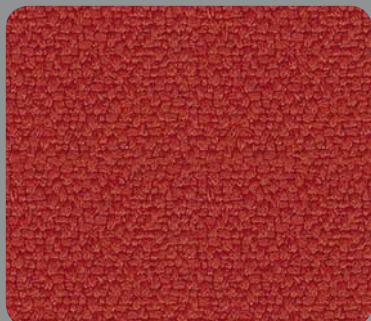


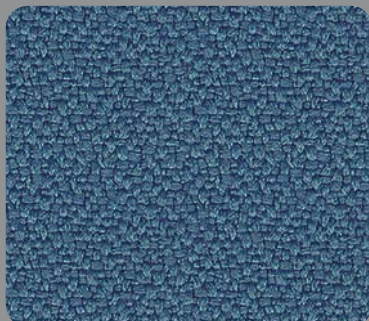
xtreme

KRZESŁA / CHAIRS  
SOFY / LOUNGE SEATING

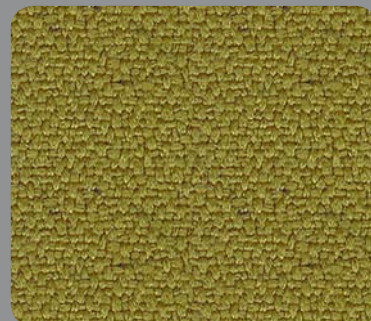
xtreme



XR076



XR004



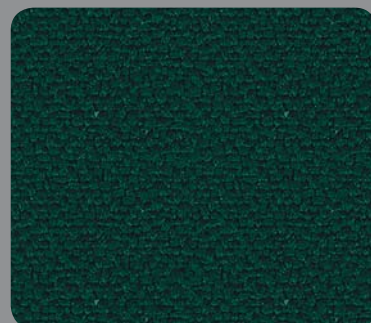
XR077



XR027



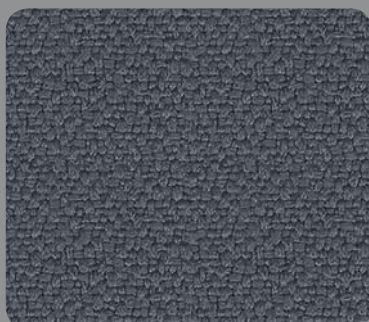
XR026



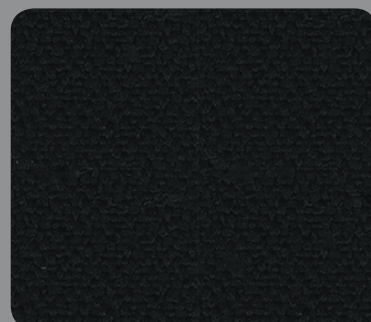
XR045



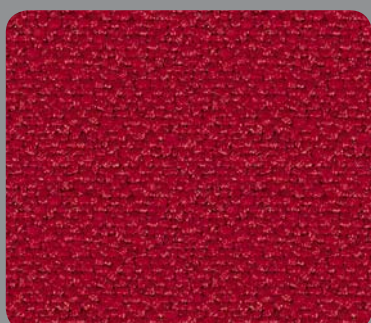
XR030



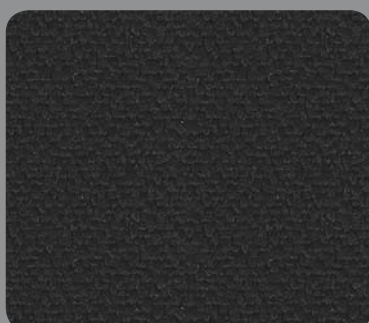
XR081



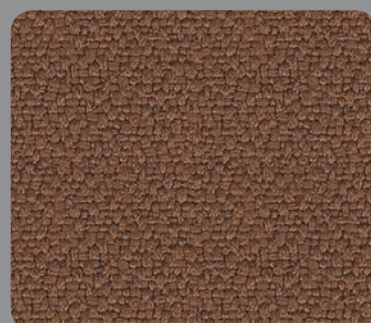
XR009



XR079



XR046



XR091

**XTREME**

<b>Composition Skład</b>	100 % XTREME FR
<b>Width Szerokość</b>	150 cm
<b>Weight Gramatura</b>	310 g/m <sup>2</sup>
<b>Abrasion Resistance Odporność na ścieranie EN ISO 12947-2</b>	100 000 Martindale cycles 100 000 cykli Martindale
<b>Fastness to light Odporność na światło EN ISO 105-B02</b>	6
<b>Fastness to Rubbing Odporność na tarcie EN ISO 105-X12</b>	wet: 4, dry: 4 na mokro: 4, na sucho: 4
<b>Peeling Resistance Odporność na pilling EN ISO 12945-2</b>	4+
<b>Flammability Trudnozapałność</b>	EN 1021 P 1&2 (cigarette & match), BS 7176 (medium hazard), CSE RF 1/75/A, CSE RF 3/77-Class1, NF-P-92-503 M1, DIN 4102 B1 EN 1021 P 1&2 (papieros i zapałka), BS 7176 (średnie ryzyko), CSE RF 1/75/A, CSE RF 3/77-Class1, NF-P-92-503 M1, DIN 4102 B1

**NOWY STYL GROUP™**BN Office Solution™  
belongs to the Nowy Styl Group  
[www.nowystylgroup.com](http://www.nowystylgroup.com)**BN OFFICE SOLUTION SP. Z O.O.****DZIAŁ HANDLOWY**

ul. Mięśowicza 6, 38-400 Krosno

**TEL** 0 13 437 62 50 › **FAX** 0 13 437 62 55**INFOLINIA** 0 801 150 157**E-MAIL** [info@bnos.pl](mailto:info@bnos.pl)**WWW** [www.bnos.pl](http://www.bnos.pl)**EXPORT DEPARTMENT**

ul. Mięśowicza 6, 38-400 Krosno, Poland

**TEL** +48 13 436 36 05 › **FAX** +48 13 437 62 57**TEL** +48 13 437 62 50**E-MAIL** [info@bnos.eu](mailto:info@bnos.eu)**WWW** [www.bnos.eu](http://www.bnos.eu)**BSQU-WCTRE - 01/2008**